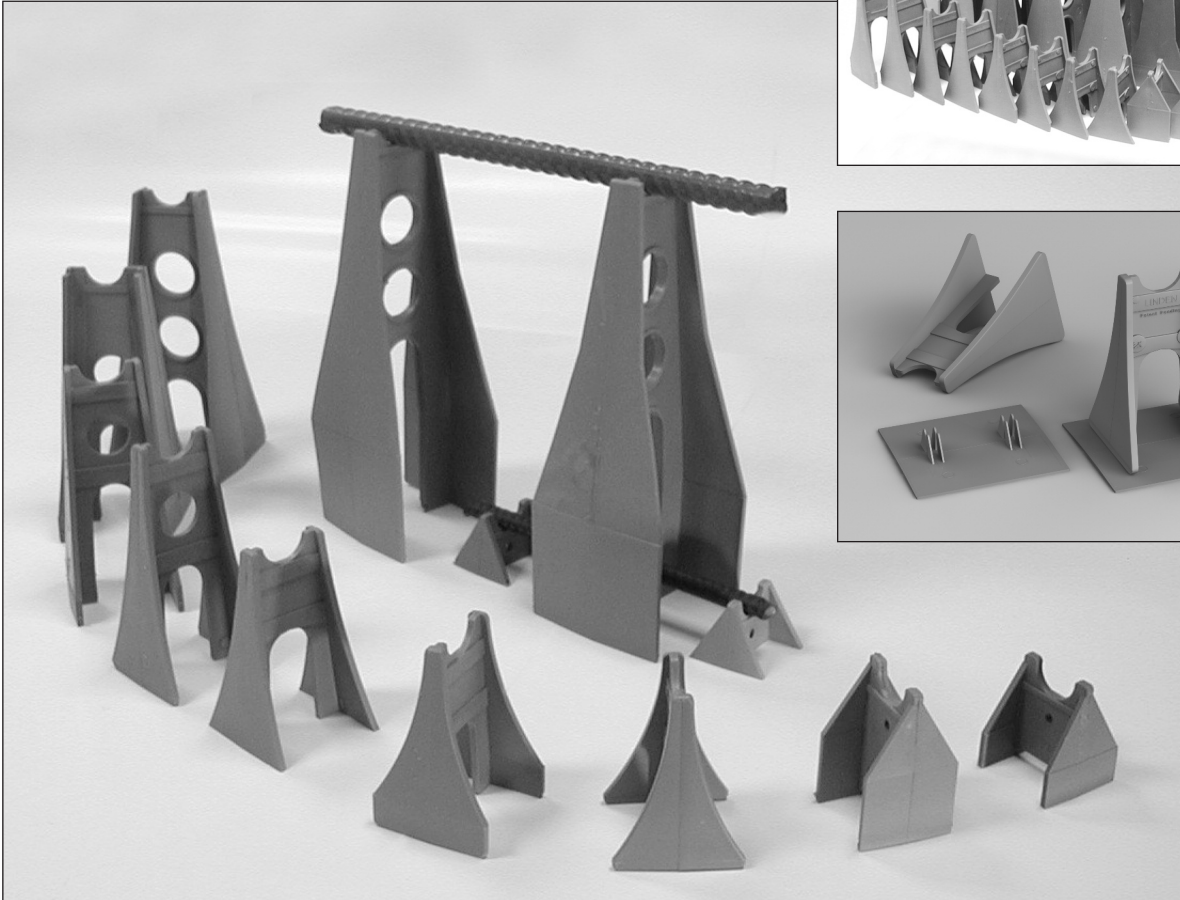
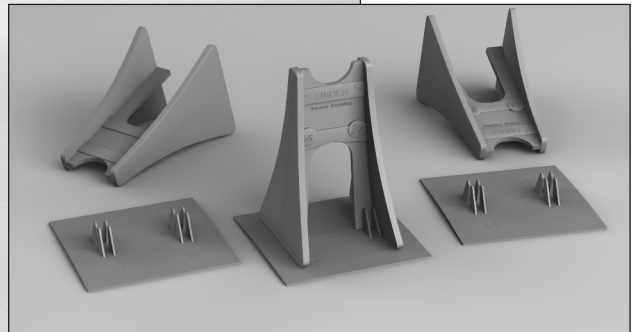
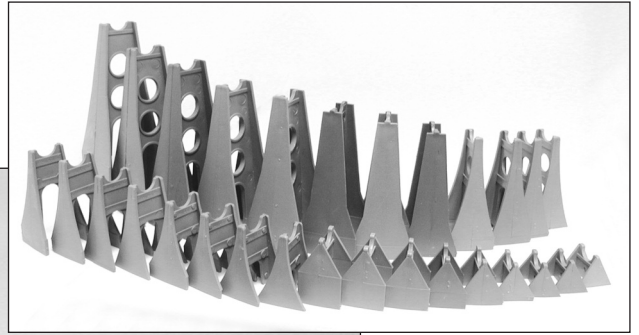


LINDEN CHAIRS



CORROSIFREE ALL PLASTIC Linden Chairs are used in slabs for supporting all types of reinforcing steel. Excellent for supporting epoxy coated rebar in bridge deck construction, or where-ever a corrosion free support is required. The high sizes have an arch design for straddling lower mats of rebar. The chair is made of High Impact polypropylene and its design gives it the strength of steel. Linden chairs are strong yet light in weight and packaged in poly bags for convenience of carrying around job sites.



ART MOULD PLASTICS LTD.

49 Skagway Avenue, Toronto, ON M1M 3T9

Bus. 416-261-6118 / 1-800-605-3934

Fax: 416-261-0884

www.artmould.ca

LINDEN CHAIR DATA SHEET

Size Available -	1-10 inches every 1/4"
Colour -	concrete grey
Material -	reinforced, high- impact polypropylene
Strength -	A minimum of 400 lbs/chair
Chemical Resistancy -	excellent
Packaging -	in heavy- duty uv protected poly bags Quantity varies by size
Installation -	good for both Black and Corrosion resistant rebar place chairs on deck forms can straddle bottom steel bars spacing depends on loads standard is every 3-4 feet
Sand Plate -	One size fits all Linden Chairs up to 7"

LINDEN CHAIRS - SIZES AND PACKAGING WEIGHTS

MM	INCH	PCS/BAG	LBS/MFT	CTN SKID	SKID QTY
25mm	1"	500	30	40	20,000
32mm	1 1/4"	500	35	40	20,000
40mm	1 1/2"	250	46	40	10,000
45mm	1 3/4"	250	50	40	10,000
50mm	2"	250	62	40	10,000
58mm	2 1/4"	200	78	40	10,000
63mm	2 1/2"	200	82	40	8,000
70mm	2 3/4"	300	84	25	7,500
75mm	3"	300	85	25	7,500
77mm	3 1/4"	300	88	25	7,500
85mm	3 1/2"	300	90	25	7,500
92mm	3 3/4"	200	93	25	5,000
100mm	4"	200	95	25	5,000
108mm	4 1/4"	200	98	25	5,000
110mm	4 1/2"	200	112	25	5,000
120mm	4 3/4"	200	119	25	5,000
125mm	5"	200	120	25	5,000
133mm	5 1/4"	200	125	25	5,000
140mm	5 1/2"	200	130	25	5,000
146mm	5 3/4"	200	148	25	5,000
150mm	6"	100	155	25	2,500
158mm	6 1/4"	100	160	25	2,500
165mm	6 1/2"	100	177	25	2,500
170mm	6 3/4"	100	184	25	2,500
175mm	7"	100	195	25	2,500
183mm	7 1/4"	75	255	25	1,875
190mm	7 1/2"	75	310	25	1,875
195mm	7 3/4"	75	338	25	1,875
200mm	8"	75	343	25	1,875
210mm	8 1/4"	75	350	25	1,875
215mm	8 1/2"	50	365	25	1,250
220mm	8 3/4"	50	378	25	1,250
228mm	9"	50	400	25	1,250
235mm	9 1/4"	50	415	25	1,250
240mm	9 1/2"	50	424	25	1,250
247mm	9 3/4"	50	430	25	1,250
254mm	10"	50	440	25	1,250